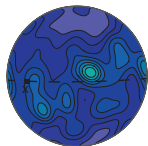


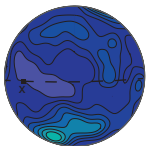
SE13-57

[4m]



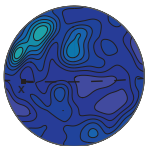
max: 2.11

(010)



max: 2.11

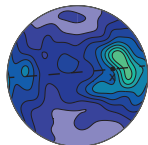
(001)



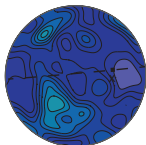
max: 1.97

SE13-123a

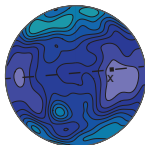
[2m]



max: 2.59



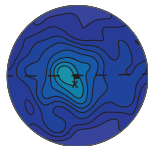
max: 1.84



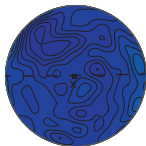
max: 1.91

SE13-123k

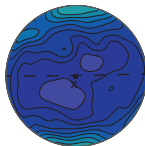
[40m]



max: 1.87

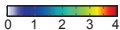


max: 1.34

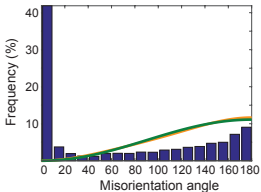
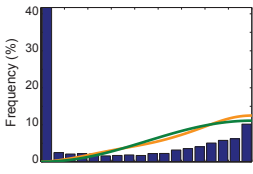
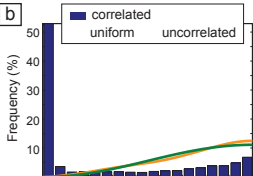


max: 1.96

Pole figures for plagioclase



b



c [2-10°] Mis. axes

